

2023  
**CT STATE**  
COMMUNITY COLLEGE

# Progress Report on Board Resolution to Restore Student Facing Services

October 7, 2024

Your Community. Your College.



In July of 2023, CT State became the **LARGEST COLLEGE** in Connecticut. Currently enrolling **64,883** students.

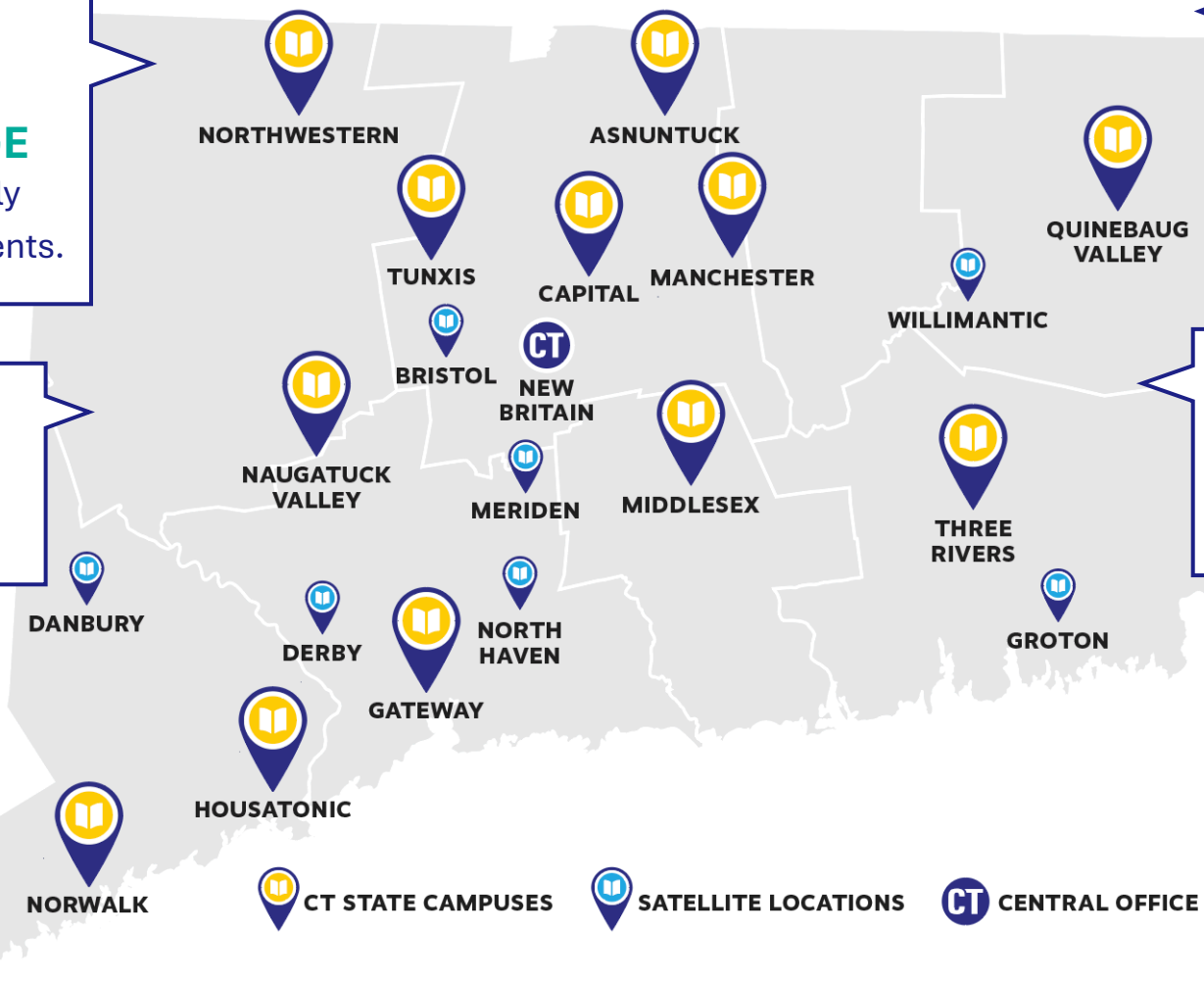
We serve **25%** of all undergraduate students in Connecticut.

We serve over **5,000** dual-enrolled high school students.

Connecticut's community colleges have a 60-year history of educating **250,000** alumni.

Over **90%** of our alumni remain in Connecticut and are Connecticut taxpayers.

**57%** are students of color; we are a minority-majority institution.



CT STATE CAMPUSES    SATELLITE LOCATIONS    CENTRAL OFFICE



## Credit Student Profile



300

Credit Programs

15:1

Student to Faculty Ratio

221:1

Student to Advisor Ratio

**40,320**

**Are Degree-Seekers**

Others are pursuing a certificate or short-term workforce training.

**27,166**

**Are First Generation Students**

**38,829**

**Attend Part-Time**

**27,952**

**Are Students of Color**

We are a minority-majority institution.

**30,000**

**Work While Going to School**

6,300 are parents attending school.

**11,000**

**Are Latine**

Five of our campuses are Hispanic-serving institutions.

**15,071**

**Attend Classes at More Than One CT State Campus**

(up from about 600 per term pre-merger)

**2,500**

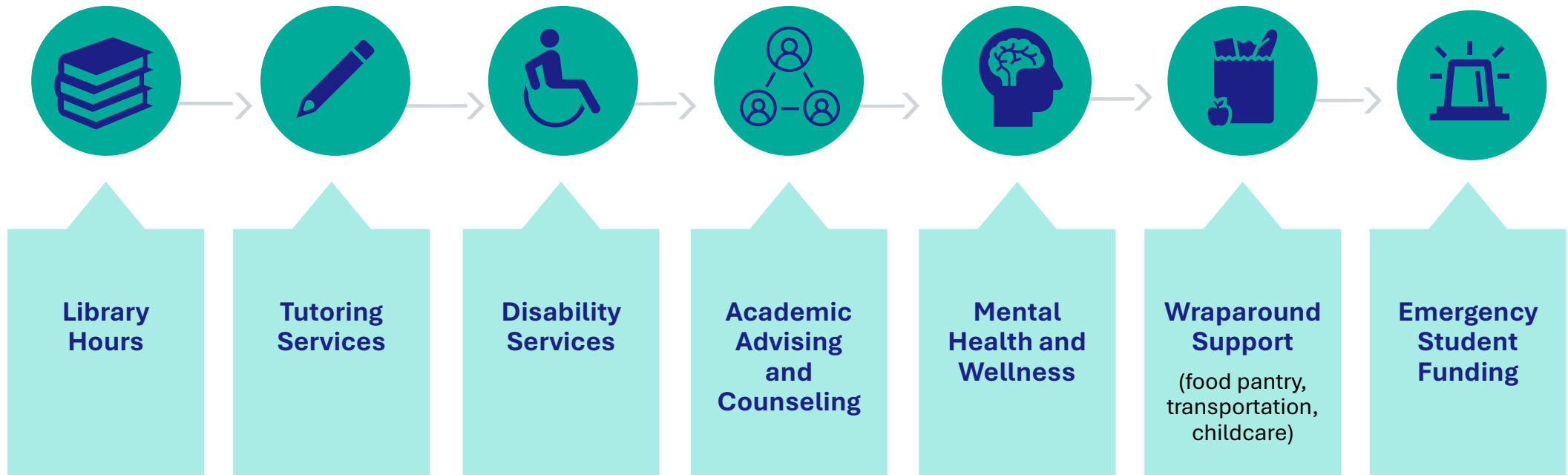
**Have a Disability or Accommodation Needs**

*98% of CT State students are from Connecticut, representing all CT school districts.*

## Resolution to Restore Student Facing Services

The Board directed CT State to develop a plan to strategically restore student services affected by the FY 24 & 25 deficit mitigation

**Plan should prioritize the key student services such as:**





## The CT State Plan Will

- Align with CT State's strategic priorities and goals
- Leverage the Holistic Student Support Surveys on student needs & challenges
- Recognize that no two years are the same & analyze the makeup of the student body and how they access our campuses/offerings
- Honor our Principles of Shared & Participatory Governance
- Provide a timeline for implementation
- Identify a funding source
- Be transparent



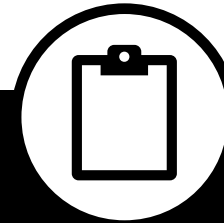
▶▶ **CT State Progress in Developing the Plan**



**Campus leaders have engaged with local stakeholder groups to identify student needs**



**Initial recommendations submitted on 9/27/24  
Finance Division is analyzing the cost for each**



**CT State completed a survey on the Hours of Operation by for student facing services by campus and satellite location**

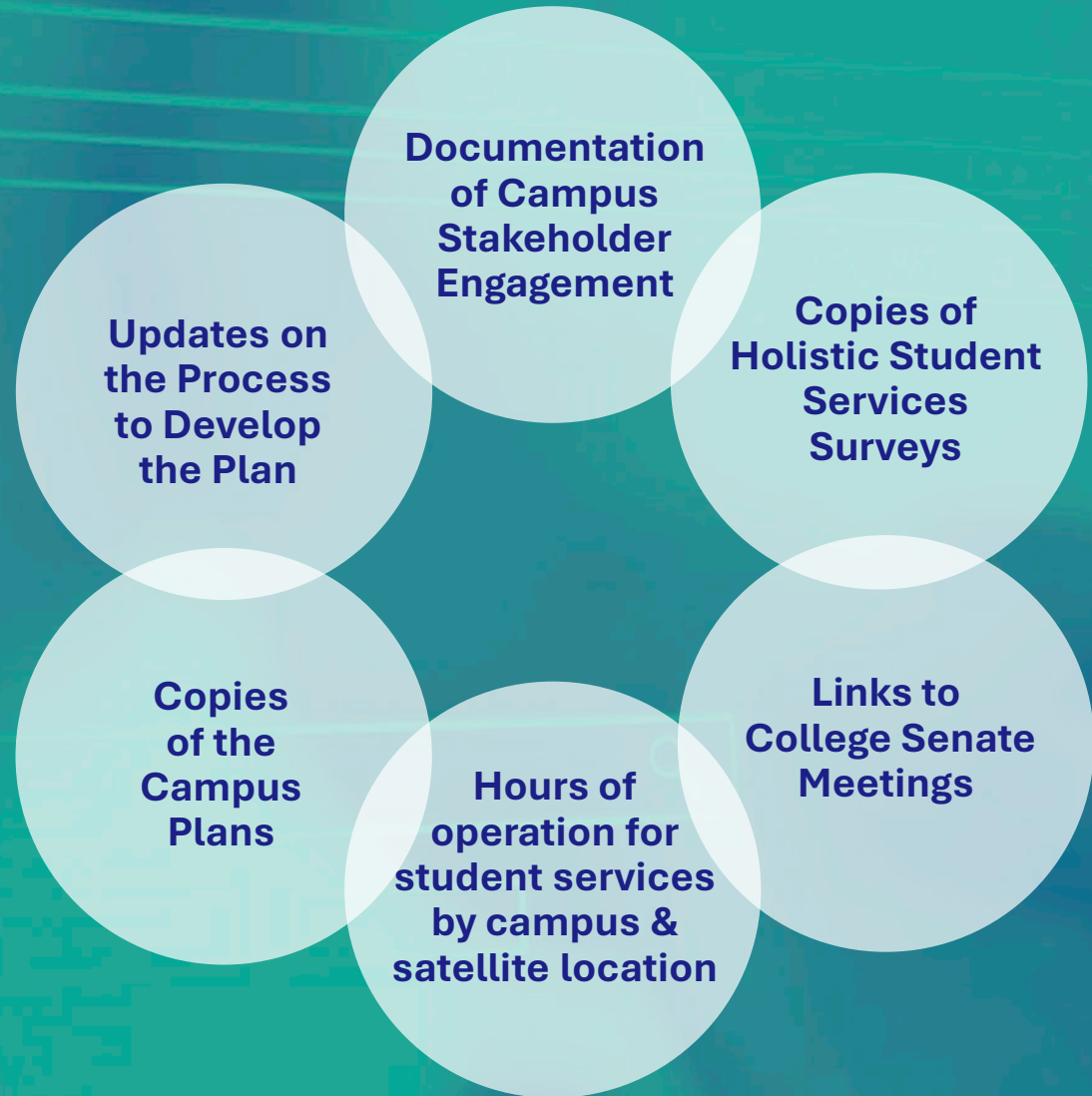


**With support from College Senate leaders, the timeline to develop the plan was extended to allow for statewide shared governance**



# CT State is Committed to Transparency

The college has established a webpage that will contain:





Thank You

---

**CT STATE**  
COMMUNITY COLLEGE